



# The Food Shed

a project of

# Land to Table

# Network Society







# Presentation Overview

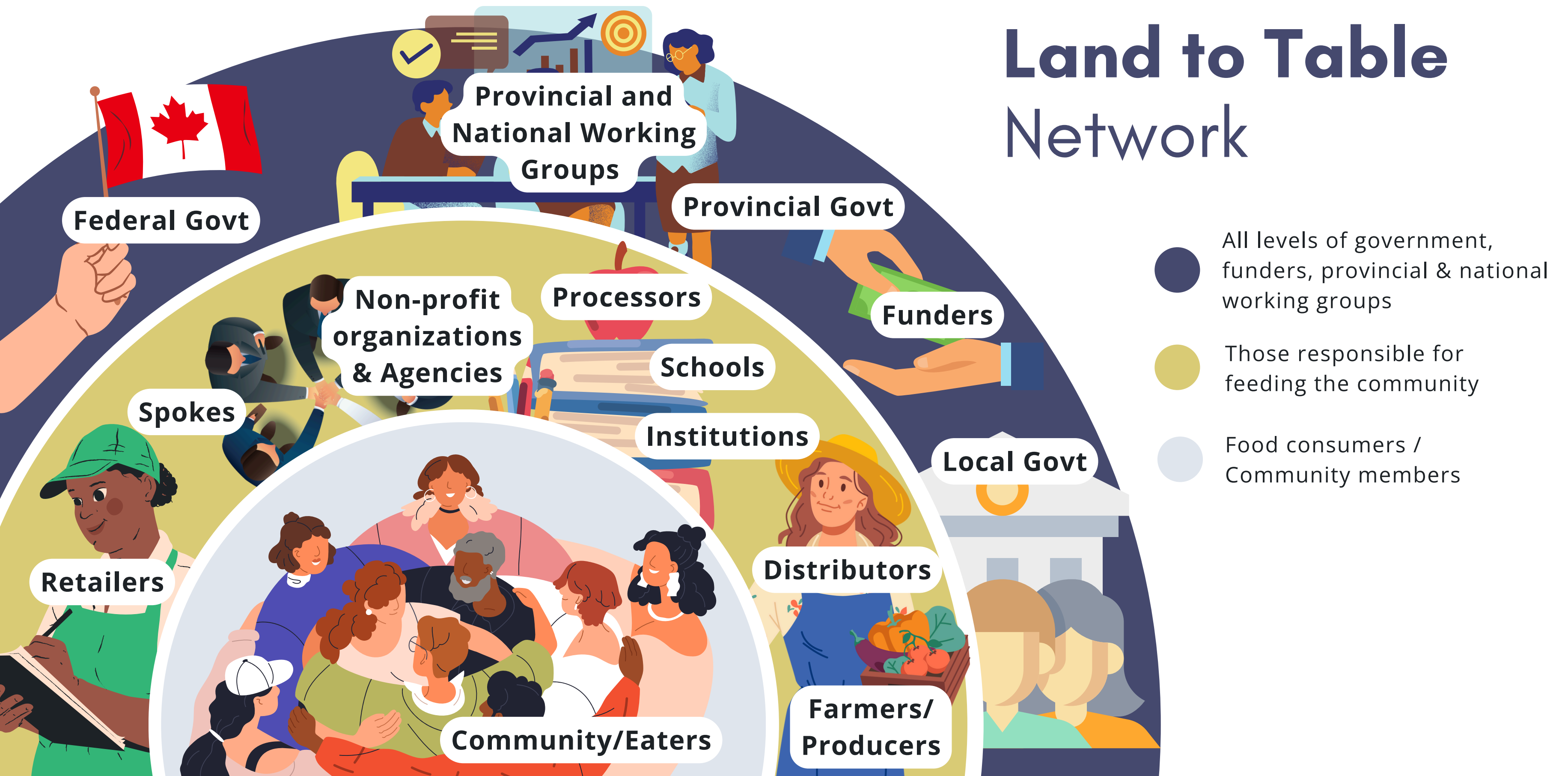


- Brief intro of L2T
- Introduce The Food Shed
- Explain how TFS will function
- Share how producers, community orgs, and the public can get involved
  - potential connections to SNC Ag Park
- Open it up for any questions and conversation





# Land to Table Network





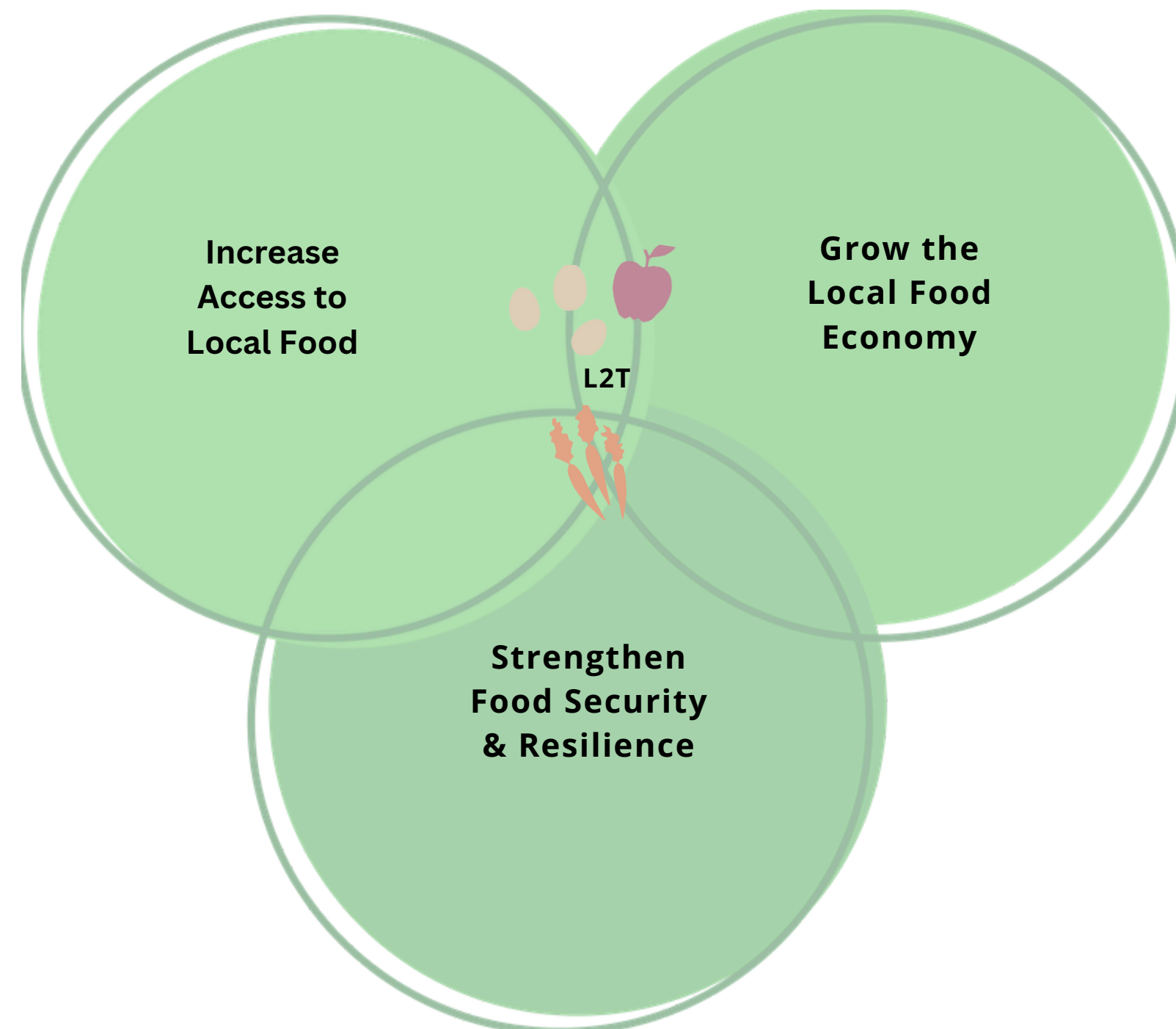
## Network Functions

- Build the Network
- Undertake Action
- Enhance regional capacity
- Advocate for systems change

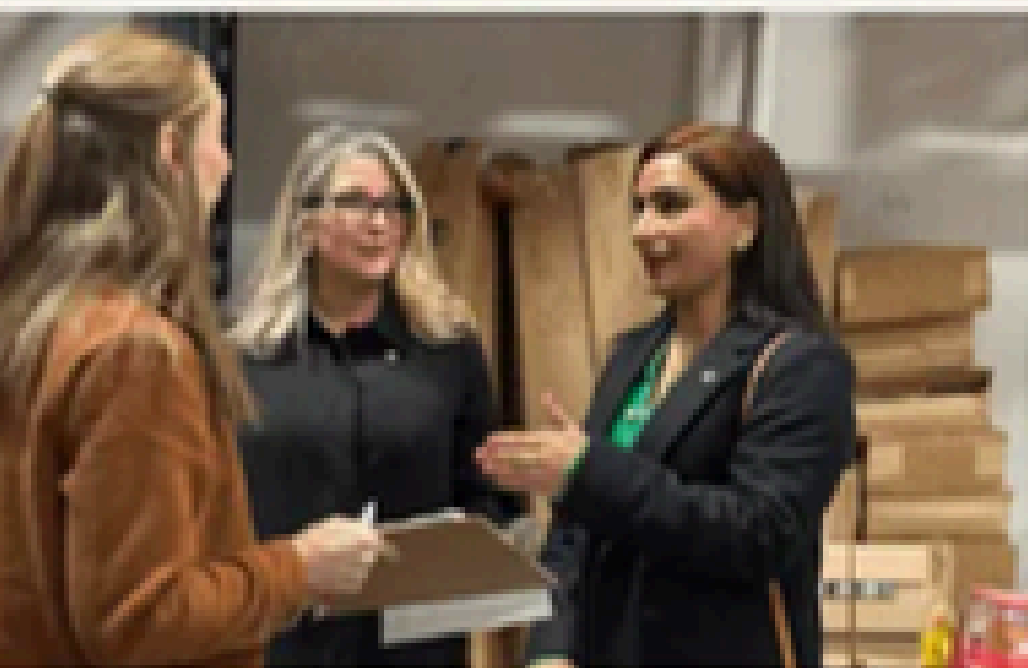




# Building Toward The Food Shed







**On March 17, we gathered with Harwinder Sandhu, Parliamentary Secretary for Agriculture and MLA for Vernon-Lumby, and Lana Popham, Minister of Agriculture and Food, to announce and celebrate a \$1 million investment from the Province of British Columbia and United Way BC to develop The Food Shed.**



# What is The Food Shed?

The Food Shed is an Armstrong-based wholesale warehouse connecting our community's schools, institutions, social service agencies and non-profit organizations to year-round, local, affordable, food grown by regional farmers.



Located at the Valley Direct Warehouse at the Rancho Vignola site in Armstrong, BC.





## Our Mission

Connecting regional food producers with agency partners and schools through a warehouse that helps to ensure year-round access to fresh, affordable, locally grown food.



## Our Vision

Local food flows seamlessly from the land and local producers, to organizations in service to our communities.







# Who is The Food Shed for?

## Local food for local communities

The Food Shed connects small-to medium-scale farmers and community organizations through a centralized warehouse.

It offers farmers a reliable wholesale outlet and gives regional food buyers access to affordable, locally grown produce—strengthening the local food economy.

*Fair pricing for farmers, affordable food for community.*





# THE FOOD SHED



Storage and  
Processing Space



Warehouse

*Rancho Vignola*  
SITE

Local Food Supply



Producers

Affordable Year-  
Round Local  
Food



Community Orgs  
and Schools



# THE FOOD SHED

## Operations:

01

**Local Food Warehouse  
(Bulk/Wholesale  
Procurement  
and Distribution)**

02

**Food  
Processing**

03

**Community Food  
Marketplace**



## The Timeline

The Food Shed is currently in mid stages of development. From this vantage point, the project has several key phases to reach financial sustainability by 2030. The phases are currently mapped-out as follows:

### Proposal

Pre-development planning and confirmation of funding for Phases 2 and 3.

Nov 2023 - Nov 2024



### Pre-planning

Partnership development, lease agreement, working with an architect, and early market research.

Jan 2025 - August 2025



### Phase 1

Business plan completion.  
Farmer engagement  
Contract development  
Infrastructure upgrades

October 2026 - Mar 2026



### Phase 2

Processing room development plan complete  
Early food procurement and testing distribution  
Renovations near completion

June 2026 - December 2026



### Phase 3

Community Food Market Place testing  
Final processing equipment installed  
Processing room early testing.

January 2027 - July 2027



### Phase 4

Ramping up operations of warehouse, processing room, and community marketplace

July 2027 to 2030







# Getting Involved



# Local Producers

## Getting Involved: Benefits for Producers



- Consistent and reliable market opportunities (e.g. seasonal growing contracts)
- Fair pricing
- Aligned values (e.g. regenerative, organic, sustainable, just working conditions, etc.)
- Access to new large wholesale markets to diversify revenue streams
- Storage space (cold, dry, and frozen)
- Light processing and packaging of products
- A network of like-minded producers and purchasers
- Organized administrative support to help local farmers scale up and become "wholesale ready"
- Community engagement opportunities to teach and share food literacy and agricultural experiences and knowledge





# For Community Organizations

## Getting Involved: Services Available for Community Orgs

- Reliable, consistent access to affordable, nutritious local food year-round
- Additional donation and food recovery opportunities
- Opportunities to purchase retail food items through Valley Direct
- Support in building and distributing cost-recovery food programs (e.g. food boxes, frozen meals, etc.)
- Fundraising support to purchasing local food
- Access to a connected bio-regional food system, providing consistent food access and support in times of emergency



# For sncəcmatqtn Agriculture Park and Friends of SAP

- Opportunities for Farmers at SNC Ag Park to produce wholesale crops for TFS – to encourage new or seasoned farmers
- Partner on Grant applications – to bring temporary cold storage to the site – to transport to TFS
- Support for the community farm to sell to TFS or supply food to community organizations
- A community farm could provide that land-based learning and food literacy education
- To share a larger base of volunteers
- Shared storytelling – social media





# Our Community

## Getting Involved: Ways to Support The Food Shed



- **Financial support** for capital improvements to the warehouse space.
- **Monetary donations** to support organizations in accessing more local food.
  - *Fill the Gap*
- **Volunteer opportunities** will be available in the future.
- **Help us make connections.**  
Reach out if you know a farmer that would like to grow food that goes back to the community, or an agency currently purchasing food that would like to access quality nutritious local food at affordable prices.





Thank you!



<https://thefoodshed.ca/>  
[sammy@landtotablenetwork.com](mailto:sammy@landtotablenetwork.com)

